

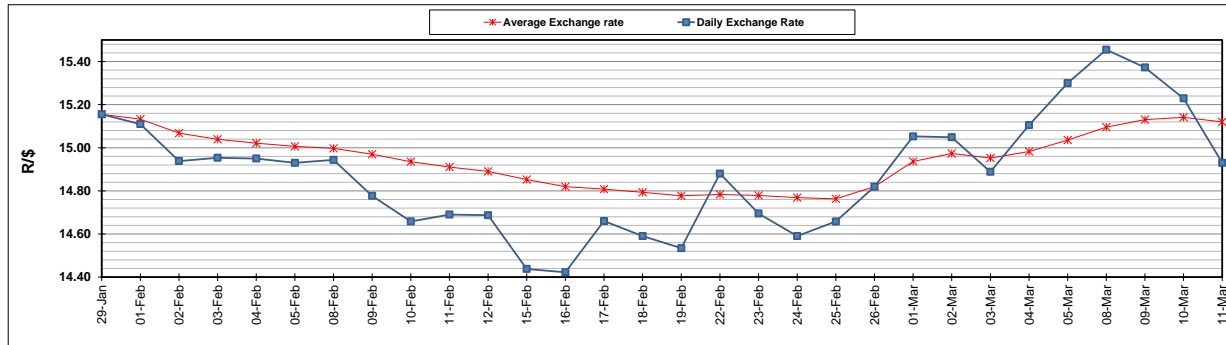
	PETROL 95 ULP	PETROL 93 ULP & LRP	DIESEL 0.05%	DIESEL 0.005%	ILL. PAR.
GAUTENG PUMP PRICE (SA c/l) AS FROM 03/03/2021	1,632.000	1,615.000	-	-	-
WHOLESALE PRICE (SA c/l) AS FROM 03/03/2021	-	-	1,412.420	1,416.820	845.688
SINGLE NATIONAL MAXIMUM RETAIL PRICE	-	-	-	-	1,071.000
BASIC FUEL PRICE - 11/03/2021 (SA c/l)	755.223	745.426	706.997	709.419	683.391
PRESS RELEASE CONTRIBUTION TO BFP 03/03/2021 - 11/03/2021 (SA c/l)	665.170	658.170	653.630	658.030	633.128
UNIT OVER/(UNDER) RECOVERY - 11/03/2021 (SA c/l)	(90.053)	(87.256)	(53.367)	(51.389)	(50.263)
AVERAGE BASIC FUEL PRICE 26/02/2021 - 11/03/2021	734.376	724.032	703.148	706.036	680.571
AVERAGE UNIT OVER/(UNDER) RECOVERY 26/02/2021 - 11/03/2021	(88.706)	(85.362)	(65.718)	(64.806)	(61.543)

ANALYSIS MOVEMENT OF AVERAGE OVER/(UNDER) RECOVERY

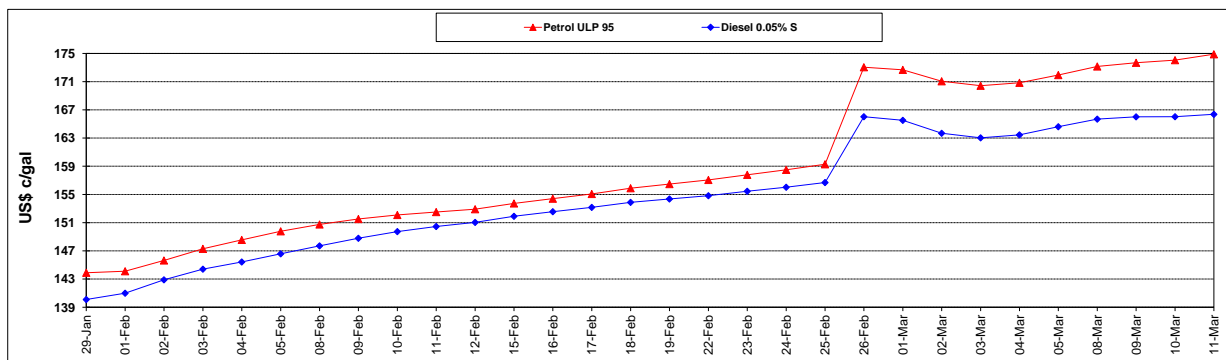
	PETROL 95	PETROL 93	DIESEL 0.05%	DIESEL 0.005%	ILL. PAR.
- MOVEMENT IN INTERNATIONAL PRODUCT PRICES	(71.367)	(68.267)	(49.116)	(48.136)	(45.474)
- MOVEMENT IN EXCHANGE RATE	(17.339)	(17.095)	(16.602)	(16.670)	(16.069)
AVERAGE UNIT OVER/(UNDER) RECOVERY 26/02/2021 - 11/03/2021	(88.706)	(85.362)	(65.718)	(64.806)	(61.543)

R/\$ EXCHANGE RATE - (R/\$14.9300 - 11/03/2021)

EXCHANGE RATE USED IN BASIC FUEL PRICE



INTERNATIONAL PRODUCT PRICES OF BASKET USED IN BASIC FUEL PRICE



BASIC FUEL PRICE IN SA CENTS PER LITRE

